

# Play-Alongs Fast Zeppelin Rock

♩ = 172

Washy Hi-Hat

Musical notation for Washy Hi-Hat in 4/4 time. The first measure has a quarter rest followed by a quarter note with an accent. The following measures consist of eighth notes with accents, grouped in pairs. The notation is on a single staff with a drum clef.

A

*f*

Musical notation for Section A, marked with a forte (*f*) dynamic. It features a sequence of eighth notes with accents, followed by four measures of diagonal slashes representing a drum solo. The notation is on a single staff with a drum clef.

Four measures of diagonal slashes representing a drum solo, continuing from the previous section. The notation is on a single staff with a drum clef.

Fill

Musical notation for a fill, consisting of eighth notes with accents. The notation is on a single staff with a drum clef.

B

Guitar Solo

Four measures of diagonal slashes representing a guitar solo. The notation is on a single staff with a drum clef.

Four measures of diagonal slashes representing a guitar solo, continuing from the previous section. The notation is on a single staff with a drum clef.

Four measures of diagonal slashes representing a guitar solo, continuing from the previous section. The notation is on a single staff with a drum clef.

C

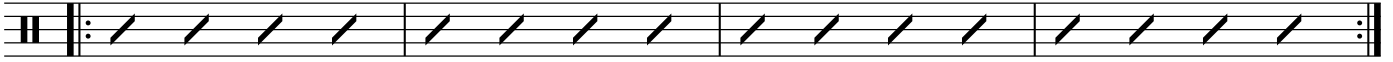
(Trading Section)  
Drum Solo 3x

Four measures of diagonal slashes representing a drum solo. The notation is on a single staff with a drum clef.

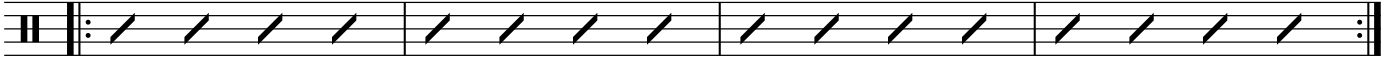
Bass Solo 3x

Four measures of diagonal slashes representing a drum solo, continuing from the previous section. The notation is on a single staff with a drum clef.

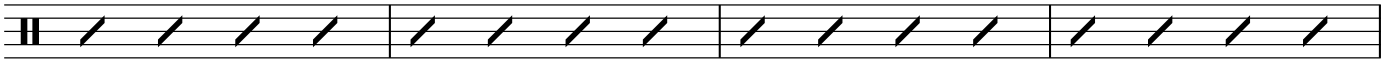
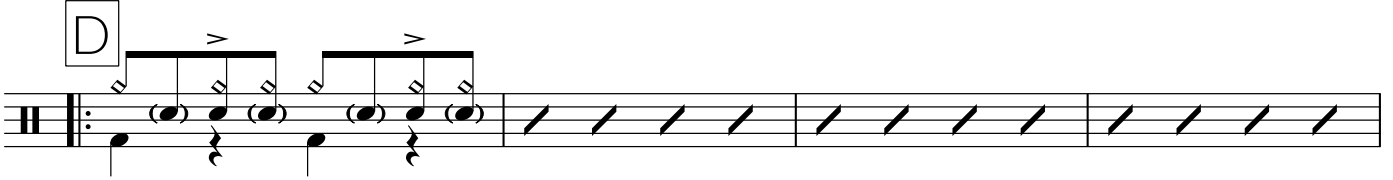
Guitar Solo 3x



Drum Solo 3x



D



1.



2. Bonham Style Ending

